

February

2024

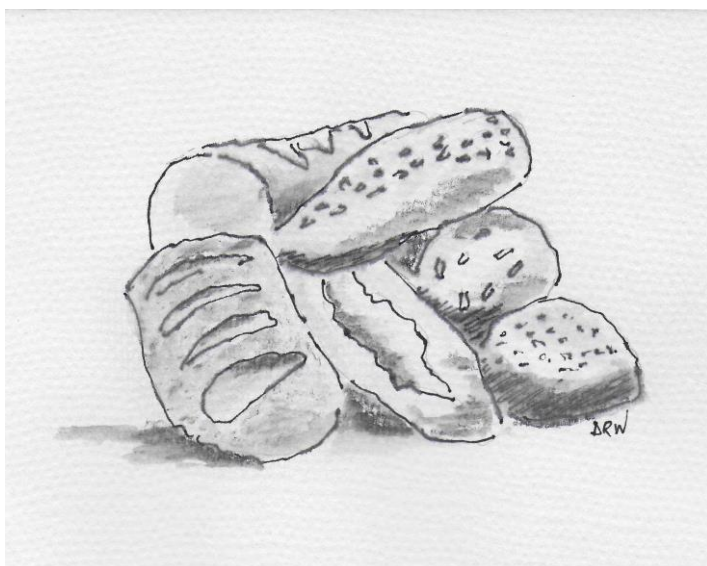


50p

# St Peter's

Leckhampton Parish Church

## Parish Magazine



[www.stpetersleck.org](http://www.stpetersleck.org)

[parishofficeleckhampton@btinternet.com](mailto:parishofficeleckhampton@btinternet.com)

*part of the South Cheltenham Team Ministry*

*The contents of this magazine do not necessarily reflect the views of the PCC or the editor, but are those of the individual contributors*

## **Our Vision Statement**

St Peter's Church Leckhampton  
exists to love and worship God,  
to serve our neighbours and  
to pass on the faith in Jesus Christ.

## **The Parish Prayer**

Loving God  
Open our eyes that we might see you.  
Open our ears that we might hear you.  
Open our hearts and minds that we  
Might respond to you and bring others to know you.  
We ask this in the name of Jesus Christ  
Our Lord who lights our way.  
Amen

+++++

*Cover pic: Give us today our daily bread. DRW*



# St Peter's

Leckhampton Parish Church

In this February issue...

Contents	Pages
Services during closure	4
Services and Readings	5
Gary writes.....	6 – 7
From the Parish Registers	8
Friday Lunches	9
From Rev Jacqueline	10
Reordering Update	12 – 13
The Cotswold Listener	14
The diocesan Messenger	15 – 16
Civil Parish News	18
Rotas for 8am <i>paper copy only</i>	18
Parish Directory <i>paper copy only</i>	27
Contacts <i>paper copy only</i>	28

*Editor: David Webber*

*Deputy Editor: vacant*

*Business and Advertising Manager: Sue Marlow*

*Distribution Manager: Peter Davies*

*Printers: Parish Office*

Date	Sunday	Service	Time	Venue	Minister
14-Jan	Epiphany 2	H/C	8am	Church Cottages	Rev Gary
21-Jan	Epiphany 3	H/C	10am	St. Stephen's	Rev Gary
28-Jan	Epiphany 4	H/C	8am	Church Cottages	Rev Gary
4-Feb	Candlemas	H/C	10am	St. Stephen's	Bishop Robert
11-Feb	Sunday before Lent	H/C	8am	Church Cottages	Rev Gary
14-Feb	Ash Wednesday	H/C + Ashing	7.30pm	St. Christopher's	Rev Lauren
18-Feb	Lent 1	H/C	10am	St. Stephen's	Rev Gary
25-Feb	Lent 2	H/C	8am	Church Cottages	Rev Gary
3-Mar	Lent 3	H/C	10am	St. Stephen's	Rev Gary
10-Mar	Mothering Sunday	H/C	8am	Church Cottages	Rev Gary

Please do continue to connect with the service you are most used to and, when there isn't one that week, please take the opportunity to **join in** with the worship at one of the other churches in the South Cheltenham Team:

There is a 10am service at all of the other churches each Sunday, with an 8am Holy Communion service at Pip & Jim's on a 1<sup>st</sup> Sunday and Emmanuel on a 3<sup>rd</sup> Sunday.

Do let a Churchwarden know if you like help with transport during this time.

*Rev Gary.*

## Live Stream Services for February

St Peter's will be closed between 8 Jan & 11 March for re-ordering work.

During this time there will be live-streams from the Cottages and from

St Stephen's which can be accessed via [www.stpetersleck.org](http://www.stpetersleck.org) or

[www.facebook.com/stpetersleckhampton](https://www.facebook.com/stpetersleckhampton)

Alternatively, you can connect with Gloucester Cathedral live-stream during

that time from here: [https://gloucestercathedral.org.uk/worship-and-](https://gloucestercathedral.org.uk/worship-and-community/services/sunday-eucharist)

[community/services/sunday-eucharist](https://gloucestercathedral.org.uk/worship-and-community/services/sunday-eucharist)

## Readings for February

Date	Day	Readings
4 <sup>th</sup>	CANDLEMAS	Malachi 3.1–5 Hebrews 2.14–end Luke 2.22–40
11 <sup>th</sup>	SUNDAY BEFORE LENT	2 Kings 2.1–12 2 Corinthians 4.3–6 Mark 9.2–9
14 <sup>th</sup>	ASH WEDNESDAY	Joel 2.1–2, 12–17 2 Corinthians 5.20b–6.10 Matthew 6.1–6
18 <sup>th</sup>	LENT 1	Genesis 9.8–17 1 Peter 3.18–end Mark 1.9–15
25 <sup>th</sup>	LENT 2	Genesis 17.1–7, 15–16 Romans 4.13–end Mark 8.31–end

**Gary writes.....**

## **The Three S's of Lent**

Lent is fast approaching, it's earlier this year!

Will it be business as usual, or are you planning to do something different?

Traditionally, Lent leaves many of us wondering what we should give-up, or perhaps take-up. Many people want to keep a good, and perhaps holy, Lent, but are unsure as to how to go about it.

Peter J. Gomes, former Chaplain to Harvard University, suggests that we organise our Lenten practices around the three S's of: Silence, Study and Service.

1. For 'Silence' he recommends that we find time for 15 minutes of absolute quiet at least once a week during Lent. This, he said, could be scheduled for any appropriate place at any time, though he did counsel against scheduling the silent time for bedtime, saying wisely, 'You will fall asleep, and although sleep is silent, it is not the silence of which we speak!' See what happens in the silence?

2. For 'Study', again he advises setting aside 15 minutes one day a week for some ordered reading of suitable texts. To those who wish to read from the Bible, he proposes working through one of the 4 Gospels, or reading through the psalms. You may also consider reading the Archbishop's recommended Lent book for 2024, 'Tarry Awhile' by Selina Stone. See what stands out for you?

3. In relation to 'Service', Gomes again suggests a 15 minute investment each week, this time in some work of charity or kindness, lest we (in his words) become 'too private and self-absorbed.' How can you help someone else?

To those who might say that these 15 minute recommendations, a total of just 45 minutes a week, are hopelessly inadequate, Gomes offers this reply:

*'It is better to succeed in little than to fail in much, and more Christians have been lost to the faith by attempting so much that they are destined to fail, unable to do anything. Spiritually, as in other matters, we must crawl before we walk, and walk before we run or leap. My counsel is to try the routine as proposed until at least mid-Lent and then adjust it as you wish.'*

Wise advice indeed! My counsel is that these disciplines are not solely Lenten, and can be continued into the Easter season and beyond. Adjust them as appropriate and turn them into a rhythm for your lives.


Do let me know how you get on with your three S's and share your progress and reactions with anyone who will listen, perhaps they too will be encouraged to try them out. I pray that they make a difference in your life as you move joyfully through Lent, Easter and beyond.

*Rev'd Gary*

---

# LENT THROUGH THE LENS

AN EVENING WITH DR JANE WILLIAMS



Wednesday 21st February 7.30pm  
St Christophers Warden Hill

Free but places are limited book via  
[southcheltenham.church/lent](http://southcheltenham.church/lent)

***More details on page 22.***

## *From the Parish Registers*

*There were no baptisms in January*

*There were no weddings in January*

*We offer our sincere sympathy to the families of those who have recently died, especially:*

Angela Angus

Ena Meechan

[AtaLoss.org](http://AtaLoss.org) is the UK's most comprehensive hub of bereavement support and information for anyone bereaved and for those supporting them. You can easily search using filters according to age, location or relationship to the deceased and find support from the many hundreds of services listed, confident that the details are accurate, up to date and offer choices from a wide range of support available. Useful things to read, helplines and a FREE live-chat counselling service are also available on [www.ataloss.org](http://www.ataloss.org) to help anyone deal with their loss, whatever the circumstances and whatever their faith or none.

**Bereavement Support** Please contact one of the clergy if you would like to talk about a bereavement. Please visit the church Wellbeing webpage for more details.

\*\*\*\*\*

## **Leckhampton Local History Society**

Meetings for January, February and March will not be held in church as it will be closed for reordering work. The LLHS committee will announce alternative plans in due course.



**Activities in the Cottages** are not affected by the church closure so can continue as normal.

**Little Pebbles** *Tuesdays 10.00 to 11.30 in the Cottages during term time. Please contact Lara Skinner via the Parish Office for details.*

## **Craft-T-Time**

Do join our friendly and supportive group on Wednesday mornings from 10-12 in the Cottages. All are welcome to join, even if just for a 'cuppa' and a chat.

*Helen Shill* coordinator

**Men's Group** The next gathering will be at the Wheatsheaf on Thursday 1<sup>st</sup> February at 12.30pm. There will be skittles on **20<sup>th</sup> March** at The Somerset Arms. Details from John Laurence.

*John Laurence*

**Youth News** The Youth program can be all found here: <https://southcheltenham.wordpress.com/youth/>

## **FRIDAY LUNCH with FRIENDS 2024**

Come and enjoy a light lunch with friends old and new

**Friday 23 February 2024 and  
Friday 22 March** (earlier in the month than usual as Good Friday is the 29th!)

12.30 – 2pm at the home of Sally & Peter Marlow  
1 Vineries Close (off Kidnappers Lane)

Donations for The Children's Society will be welcome  
Please come and join us!

The lunches in the autumn raised £292 for the Children's Society thanks to generous donations.

## Thank You from Rev Jacqueline

*Dear everyone at St Peter's,  
This is a short note to say "thank you" for your very generous presents which you gave us for our final service. We are very much looking forward to going to Windsor Castle on 27th July, followed by afternoon tea. Thank you for being such a supportive congregation during my curacy. We will remember our time at St Peter's fondly and hope that we will see you soon. I will certainly be back to see the newly reordered church!  
With love and best wishes for the future.*

*Jacqueline, David, Eleanor and Martha.*

## Parish Giving Scheme

A great way to support St. Peter's is through the parish giving scheme, which enables you to give, and for St. Peter's to receive, a monthly donation towards the mission and ministry of the church and parish. This is administered through the Diocese of Gloucester, so every penny comes back to St. Peter's and is gift-aided also. This provides the church with a regular income and a means with which to plan ahead. It is especially important in 'times like these' when services, bookings and income are reduced. For further information, email Peter Marlow: [peter.marlow@softcopy.co.uk](mailto:peter.marlow@softcopy.co.uk) or check the Stewardship page of the church website: [www.stpetersleck.org](http://www.stpetersleck.org).

**You can now enrol in the Parish Giving Scheme by phoning 0333 002 1271 to set up a regular donation. All you need is your bank account details and our parish code LKPT.**

*You can also support St. Peter's by making an online donation at:*  
<https://cafdonate.cafonline.org/7930>

***There is still the opportunity to make a donation towards the new furniture, which is part of the reordering! It is now under construction by Waywood Furniture.***

## Magazine Subscription

For those who have the magazine delivered, your annual payment is now due!

The cost remains the same at **£6** for 2024

Please would you send your payment to St. Peter's via one of the following methods:

1. CAF Bank  
St Peter Leckhampton PCC  
Sort Code 40-52-40  
Account number 00006604

*(This slightly different from last year.)*

2. By cheque, payable to: **St Peter Leckhampton PCC**

Please send to: The Treasurer, c/o St. Peter's Parish Office, Church Road, Leckhampton, GL53 0QJ.

3. By cash:

Please put the cash into an envelope and deliver, in person, to the above address.

Many thanks for your continued support of the Parish Magazine.  
Any queries, please contact the Parish Office on 01242 513647.



**And going for Gold.**

## Reordering update

At long last the final stage of reordering has begun! The keys were handed over to the contractor on Monday 8<sup>th</sup> January and by the end of Day 1 many of the floorboards had been lifted revealing the void and rubble beneath.



The timber flooring had been installed in the 1960.s and was of very poor quality, and after removal it was evident that the workmanship was not brilliant. The joists were supported on piles of bricks without any mortar, and worryingly the joist under the left hand front row pew had rotted through.

The faculty did not require us to employ an archaeologist unless anything of interest was found. However, one was summoned when the flooring was removed, because just beyond the ramp an opening was revealed, (pic below) and a further opening towards the vestry showed a tunnel linking the nave area

to the boiler room below the vestry. It is big enough for a person to crawl in and we understand it was for conveying warm air from the boiler room to the church.

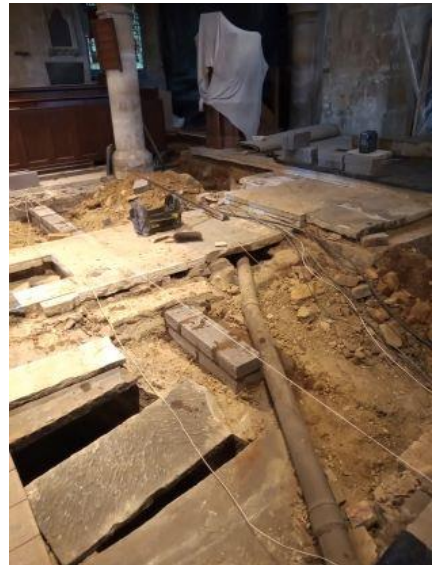
The archaeologist, Dr George Nash, has recorded any relevant evidence including the medieval slab covering the entrance. This will be reused.

*(I did think I had spotted a missing monument that Eric Miller is eager to find as I thought I could see the head of a statue, but it turned out to be the oval shape of the remains of a bag of cement!)*



There is also a thick heavy pipe going diagonally towards the pulpit. It looks like a heating pipe, but is apparently a pipe which would have linked to an organ in days gone by. Now obsolete, but it will be left in situ. (see below)

At the time of writing all timber has been removed and new joists are being put in place on proper brick pillars. Getting hold of English oak and stone is quite difficult at the moment as much of it has been stockpiled for the rebuilding of Notre Dame.



*David Webber* Churchwarden

## The Cotswold Listener

Stuart Tomlinson was recently interviewed about bellringing by Margaret, a volunteer with The Cotswold Listener, which is the free local talking newspaper for the sight impaired living in Cheltenham, Tewkesbury, and the North Cotswolds.

Their purpose is to help both the sight impaired and those who are disabled and can no longer access the written word to stay in touch with what is happening locally and to be aware of issues that interest them, enabling them to live their lives more independently.

The Cotswold Listener is produced fifty-one weeks of the year and is sent to listeners (approximately 170) on a USB memory stick.

Each week's edition lasts at least 80 minutes, starting with around 40 minutes of local news, followed by a "magazine" of general interest articles to amuse and entertain. Sometimes the magazine is followed by one-off interviews with special guests.

Their Chair of Trustees (June Little) is available to give free talks to any interested groups. She writes:

*I start each talk with a brief history of how the talking newspapers started in the UK and then move onto the story of The Cotswold Listener. How we are structured, the various volunteering roles we have and the free service we offer to the sight impaired in Cheltenham, Tewksbury, and the North Cotswold. We read some news pieces out as if we were recording and also a piece that we might use in our weekly magazine. I also talk about our Listeners who give us constant feedback and have such interesting lives themselves, and the volunteers who are an amazing group of people who record every week for fifty-one weeks of the year. We are not looking for money or volunteers but spreading the word about the service we offer to those who are visually impaired. Usually in the groups we speak to there is at least one person who knows someone who would benefit from our service.*

If you would like to listen to my recording or one of the others, do an internet search for 'Cotswold Listener' and scroll down to the recordings section (you may want to have it on in the background whilst knitting, ironing, etc!). The one about ringing at St Peter's Leckhampton consists of a short (but very informative) introduction about the church, the main interview with me and then a short summary.

*Stuart Tomlinson* Belfry Captain

# The Messenger,

## Unexpected youth club thriving in Gloucester

**When Gloucester City deanery started focusing on new ways to engage with secondary-aged young people, they had no idea that within a year God would give them what they needed to start a thriving and expanding youth club.**

At the start of 2023, Barrie Voyce, Senior Youth Connector for the Diocese of Gloucester, visited the deanery to help them think around ways to connect with youth and teenagers in their area. Together, they hit upon the idea of ensuring that the excellent relationships the church has with primary school children were not lost as they got older. The deanery decided to prioritise being there for the Year 6s as they dealt with all the challenges of transition and ensuring that they had a safe space to meet with their friends.

Inspired by this idea, the Revd Rachel Beck, Vicar of Gloucester St George's Tuffley, paid particular attention to a couple of Year 6 children who came along to their church's family drop-in and attended the summer holiday club.

Led by Laine Lewis, ordinand on placement, the church invited them back for games, chat and doughnuts on Monday evenings in September. The initial plan was to trial a group for four weeks, chat to the three or four children they'd invited and see if there was an appetite to meet more often going forward.

Barrie says, "What started out as a simple conversation with the deanery about connecting with teens in our parishes has grown into something much bigger. Showing these young people that the church cares about them and wants to provide for their needs has seen the group of young people grow and grow! It's fascinating to see how God has worked through the personal invitation given to these children to speak to ever-growing numbers of young people."

Every week, more and more 11–14-year-olds turned up – the original group inviting their friends and those inviting more. For an hour each Monday evening, the church hall is full of youth playing games, making things and chatting to the encouraged, if slightly surprised, volunteers.

Rachel says, "We've accidentally started a youth group! We are full of praise and thanksgiving to God for this, of course, and are very excited by it, whilst also having a few challenges and questions about how to sustain it and help the young people as they develop in faith."

## **Archbishop of Canterbury to visit Diocese**

This May, we will be welcoming the Archbishop of Canterbury, Justin Welby, to our Diocese as part of the Big Mission Weekend in May. From Friday 24 to Sunday 26 May, the Archbishop will be visiting various locations across the Diocese followed by a special service in the Cathedral on the Sunday afternoon. Read more: [gloucester.anglican.org/the-big-mission-weekend-with-the-archbishop-of-canterbury-24-to-26-may-2024](https://gloucester.anglican.org/the-big-mission-weekend-with-the-archbishop-of-canterbury-24-to-26-may-2024)

## **Explore Gloucester Cathedral from anywhere in new virtual tour**

**Take a virtual tour of Gloucester Cathedral to explore its most-loved spaces and delve into its past in the more hidden areas.**

Using modern technology, this new way of viewing the entire Cathedral has opened up this 1,000-year-old sacred space to everyone, anywhere in the world.

The virtual tour is available on the Cathedral's website, allowing users to journey through almost every corner of this remarkable building. Take a look around the Nave, Quire and Lady Chapel before delving into other historic areas such as the medieval Library, iconic Tower and subterranean Crypt.

Crated by local company, Virtual360toursGlos, the virtual tour will allow everyone to navigate through these areas at their own pace, from wherever they are in the world.

Read more: [gloucester.anglican.org/explore-gloucester-cathedral-from-anywhere-in-new-virtual-tour](https://gloucester.anglican.org/explore-gloucester-cathedral-from-anywhere-in-new-virtual-tour)

## **Get the latest news from the Diocese on WhatsApp**

Every Friday, get a WhatsApp message from the Diocese of Gloucester with our top three inspiring stories, videos or events, straight to your phone.

Simply visit: <https://bit.ly/OneDioceseWhatsApp>

## **Events and training**

More details for all these events at [gloucester.anglican.org/events](https://gloucester.anglican.org/events)



## **The spectacular music of Harry Potter**

**Gloucester Cathedral**

**2 February, 7.30pm to 9.30pm**

Featuring music from the Harry Potter films – performed by the International Film Orchestra.

**[gloucestercathedral.org.uk/whats-on/the-spectacular-music-of-harry-potter](http://gloucestercathedral.org.uk/whats-on/the-spectacular-music-of-harry-potter)**

## **Gaia by Luke Jerram**

**Tewkesbury Abbey**

**2 to 20 February**

Measuring seven metres in diameter, Gaia features 120dpi detailed NASA imagery of the Earth's surface. The artwork provides the opportunity to see our planet on this scale, floating in three-dimensions.

**[gloucester.anglican.org/gaia-exhibition-by-luke-jerram](http://gloucester.anglican.org/gaia-exhibition-by-luke-jerram)**

## **Movement Worship night**

**St Lawrence Church, High Street, Bourton-on-the-Water, GL54 2AW**

**2 February, 7.30pm**

Movement Worship nights are specifically designed for youth and young adults, gathering together to meet with God in a dynamic environment with contemporary worship and life applicable teaching that is practical, relevant and useful.

**[gloucester.anglican.org/movement-worship-night](http://gloucester.anglican.org/movement-worship-night)**

## **Quiet Days for anyone in ministry**

**Brownhill Monastery, Brownhill Road, Stroud, GL6 8AL**

**27 February, 10am to 4pm**

A gentle day of prayer and reflection. In the beautiful countryside of Stroud, enjoy a chance to stop, reflect and make space for God to speak.

**[gloucester.anglican.org/quiet-days-for-anyone-in-ministry-2](http://gloucester.anglican.org/quiet-days-for-anyone-in-ministry-2)**

## **Have your say**

Visit Facebook **f/Diocese.of.Gloucester**, email Katherine at

**[kclamp@glosdioc.org.uk](mailto:kclamp@glosdioc.org.uk)**, follow us on Twitter **@glosdioc**, view videos on

YouTube **Diocese of Gloucester** or visit our website **[Gloucester.anglican.org](http://Gloucester.anglican.org)**

*I have been asked to include local Parish News as below, which I am happy to do as long as it does not show allegiance to any particular political party. DRW*

## **Civic Parish News**

We are expecting the inspector's decision for a 350-house development by Millar Homes to be announced on the 7<sup>th</sup> March. These homes will be on the fields opposite the entrance to Woodlands Road off the A46.

There will be 2 extra late night "D" bus services on a Friday and Saturday, this will help those using the night time economy. A single extra journey will run from Bishops Cleeve on a Sunday at 18.53 and two further journeys to Bishops Cleeve at 2023 and 2153. Starting on January 7<sup>th</sup>. See Stagecoach for further information.

The Parish Council precept will increase by 64pence per month from April. This is the first increase in 4 years but with rising costs this is now inevitable. There is a petition for a pedestrian crossing near to Leckhampton Primary School, this petition is on the Gloucestershire County Council web site.

There is a Community Litter pick organised for March 23<sup>rd</sup> at Burrows Field at 10 am under the banner of " Lets Keep Leckhampton Clean" Parish Cllr Kit Braunholtz is keen to for local residents to become involved. The Brizen Young Peoples Centre are inviting people to join the Trustee Board as Ambassadors. We are hoping to make some changes to encourage our Young People in their future years and promote the Centre. Anyone who would like to know more or need information contact me 07761 299 087.

*Anne Regan* Parish Cllr.

***The following article is an advertising feature. As always St Peter's PCC cannot offer endorsement of any specific advertiser or event.***

## **Chorley's Auctioneers**

Overlooking the vale of Gloucester, and just a few miles from Stroud and Cheltenham, Chorley's two spacious salerooms in the grounds of the Prinknash Abbey Park estate hold monthly sales of fine art and antiques. Both sellers and buyers benefit from the facilities on offer, from ample free parking to storage facilities, not to mention a café selling mouthwatering cakes! This tranquil setting belies the company's global business, as all auctions are streamed live online, resulting in higher prices and a global audience of buyers. While embracing technology, Chorley's have not neglected their traditional values or forgotten the importance of courtesy in their relationship with clients. Chorley's focuses on sourcing items from private vendors and estates and, even in these straitened times, there is a hunger among buyers for fresh-to-the-market objects of good quality and provenance.

Too many provincial auctioneers have crowded salerooms where fine antiques jostle with boxes of prints, tailors' dummies and old brass bedsteads. Stacked in heaps, it is the way things have been done for years and makes for a Dickensian spectacle; however, despite the outward charm, stacking it high often leads to selling it low. It is also disheartening for vendors to see their treasured item stuffed in amongst many others, making them reluctant to sell further items. At Chorley's saleroom, room settings show each item to its best advantage and buyers are able to see an item's potential as part of a wider decorative scheme, often prompting them to bid on items they might have overlooked in a cramped saleroom.

The positive feedback Chorley's receives from buyers and vendors and the professional service provided continues to bring business to this rapidly expanding Gloucestershire company, with referrals increasingly coming from London and across the UK.

Chorley's provides not only auction valuations, but as an accredited member of SOFAA, professional Inheritance Tax and Insurance valuations.



Richard Whitford (circa 1821-1890), The Swanwick Prize Sheep Herd, the herd of sheep bred by Russell Swanwick of The Royal Agricultural Farm, Cirencester, oil on canvas, 74.5cm x 124cm, sold for £32,000 (plus buyer's premium) in October 2023

*Victoria Stevens* Chorleys

## CHORLEY'S AUCTIONEERS

Cotswolds Heritage since 1862



Sold for £8,000  
A 20th Century diamond ring

### Complimentary Auction Valuations

Monthly Auctions of Art & Antiques  
Probate & Insurance Valuations

Contact us today for your  
valuation

Open Valuation Mornings  
every Thursday 10am-1pm

Prinknash Abbey Park, GL4 8EU

[chorleys.com](http://chorleys.com)

01452 344499 | [info@chorleys.com](mailto:info@chorleys.com)



Very Reliable Local  
**HANDYMAN- for HOME AND GARDEN**

and all those little

**ODD JOBS**

**Qualified Electrician**

Call **Steve**

On

**01452 750455**

**07752 529450**



**GARDEN IRRIGATION SYSTEMS**

Designed and installed by us or Supply only for Pots, Tubs,

Hanging Baskets, Greenhouses or Complete Gardens

**No job too small, so give me a call**



**CRAIG RICHARDS** PG Dip GD  
**GARDEN DESIGN AND MAINTENANCE**

**Helping you discover your gardens  
hidden potential**

Craig Richards Garden Design offers a bespoke design consultancy and maintenance service in the Cotswolds and surrounding areas. We pride ourselves in providing a local professional service that is tailored to each individual project.

Full Design Service  
Drawing Service For Landscapers  
Planting Schemes

Lawn Care / Pitch Maintenance  
Hedge Maintenance  
Topiary  
Tree Maintenance  
Stump Removal

**07968737160**

## **'LENT THROUGH THE LENS'**

An evening with Dr Jane Williams Wed 21st Feb, 7.30–9pm at St Christopher's, Warden Hill.

Dr Jane Williams is the McDonald Professor in Christian Theology at St Mellitus College. She was also a visiting Lecturer in Theology at King's College London, having previously taught at Trinity College Bristol. She is an experienced editor, is regularly invited to teach and speak all over the world, and is involved in promoting theological education in other parts of the Anglican Communion.

She is married to Rowan, and they have two children. Jane will be exploring the theme of Lent via Art. Come along for an inspiring evening.

The event is free but space is limited so please book tickets via ticketsource: <https://www.ticketsource.co.uk/cnc/t-pqgoroj@southcheltenham.church/lent>

## **PANCAKE PARTY**

Tue 13th Feb, 10am-12pm at Emmanuel Church Games, crafts and pancakes. Suggested donation £2 per person. Book online at [www.cnc.church/calendar/pancakes](http://www.cnc.church/calendar/pancakes)

## **FROM THE GROUND UP**

Festival of Sustainability Sat 3rd Feb, 10am-4pm, Pip & Jim's, GL50 2DL Come join us for talks and discussions with key individuals and organisations covering the challenges we face and the actions that make a difference. Book free via [www.ftgu.info](http://www.ftgu.info)  
[facebook.com/ftgu.festival](https://facebook.com/ftgu.festival)

Why struggle at home?

Discover our unique care home

- Caring and professional staff on hand 24 hours a day
- Enjoy new friendships in our supportive and comfortable setting
- Spend the day how you please - daily entertainments arranged
- Delicious food - home cooked, with pride

Look further afield - come and enjoy the Hampton House experience

For more information call **01242 520527** or visit [www.HamptonHouseCare.co.uk](http://www.HamptonHouseCare.co.uk)  
Hampton House, 94 Leckhampton Road, Cheltenham GL53 0BN



# *I.T* IMPROVER

## *Home Computer & I.T Support*

Happy to help with all queries however small

PC Speedup/Cleanup  
PC builds/Upgrades  
Remote Assistance  
Data Recovery

Internet/Network Issues  
Technical support  
Software Help & Support  
Tutorials/Lessons

...I.T Support in your own home...

**Ben Cottle**

**07727037267**

**itimprover@hotmail.co.uk**

# TURN TO US FOR HELP AND SUPPORT

In your time of need we'll take care of all  
the funeral arrangements.  
Call us 24 hours a day.

- Funeral Pre-Payment Plans
  - Memorials

## W S TRENHAILE FUNERAL DIRECTORS

Apostle House, 175 London Road  
Charlton Kings, Cheltenham GL52 6HN

**01242 224897**

Part of Dignity plc. A British Company.



---

## CLEEVELY MEMORIALS

Specialists in Finest Quality Individual Memorials  
In Stone, Granite, Marble and Slate.  
New memorials, inscriptions  
and renovations undertaken  
Local family living in Leckhampton

Unit 5b, 83 Prestbury Road, Cheltenham, Glos, GL52 2DR  
Tel: 01242 236236  
[carolinecleevely@hotmail.co.uk](mailto:carolinecleevely@hotmail.co.uk)  
[www.cleevelymemorials.co.uk](http://www.cleevelymemorials.co.uk)



# **N.T. Boothroyd**

**Plumbing & Heating Engineer**

Gas Safe Registered and 35 years experience.

All Plumbing & Heating Work Undertaken & No Job too small.

- ✓ **Boiler & Fire Servicing**
  - ✓ **Landlord Certificates & Safety Checks**
  - ✓ **Complete Central Heating Systems**
  - ✓ **System Cleaning By Power Flushing**
  - ✓ **Radiators & Thermostatic Valves**
  - ✓ **Tap Washers & Ball Valves**
  - ✓ **Taps, Toilets, Baths, Basins & Sinks**
  - ✓ **Leaks, Burst Pipes & Pipe Lagging**
- Worcester Registered Installer**  
**12 Years Guarantee on Worcester Boilers**



**513610**

*Tel: 01242 323025*

*Tel: 01452 552192*

**Mobile: 07816 103709**

Email: [ntboothroyd@hotmail.co.uk](mailto:ntboothroyd@hotmail.co.uk)

## **HIRE THE VILLAGE HALL**

**WEDDING RECEPTIONS,  
PARTIES, MEETINGS,  
KEEP FIT, OTHER GROUP  
ACTIVITIES** up to 130 people  
Comfortable & fully heated.

Full kitchen facilities.  
Modern Tables and Chairs. Large  
stage, piano etc.

## **SEPARATE MEETING ROOM**

**For bookings, ring Mrs Peacey  
243035**

## **J.P.McGrath**

**FOR ALL YOUR BUILDING  
AND DECORATING  
REQUIREMENTS**



**1 Pembroke Road Hatherley  
Cheltenham Glos  
Tel: 01242 234228**

# **BEN HUMMEL TREE SURGEON**



**QUALIFIED AND EXPERIENCED**

**TREE FELLING  
FRUIT TREE PRUNING  
HEDGE CUTTING  
SHRUB PRUNING  
STUMP REMOVAL**

**OUR RATES ARE COMPETITIVELY PRICED,  
WE ARE FULLY INSURED.**

**FOR A FREE QUOTATION**

**PLEASE CALL 01452 855830**

**THE MAPLES, PARTON ROAD,  
CHURCHDOWN, GLOUCESTER GL3 2JH**



## **Down to Earth Electrical**

Electrician for any domestic  
electrical work

New lighting, sockets  
Fuse board replacements  
Re-wires, PAT testing & other  
inspections.

James Hiatt  
Tel: 01242 690902  
Mobile: 07783 593630

Email: [down-to-earth@blueyonder.co.uk](mailto:down-to-earth@blueyonder.co.uk)

Part P Registered



*Whilst pleased to  
welcome adverts and  
grateful for the support  
St Peter's PCC cannot  
offer endorsement of  
any specific advertiser  
or event.*